

## Manual Driver Installation Instructions:


### Equipment required

1. Force Gauge DFS.
2. USB Cable.

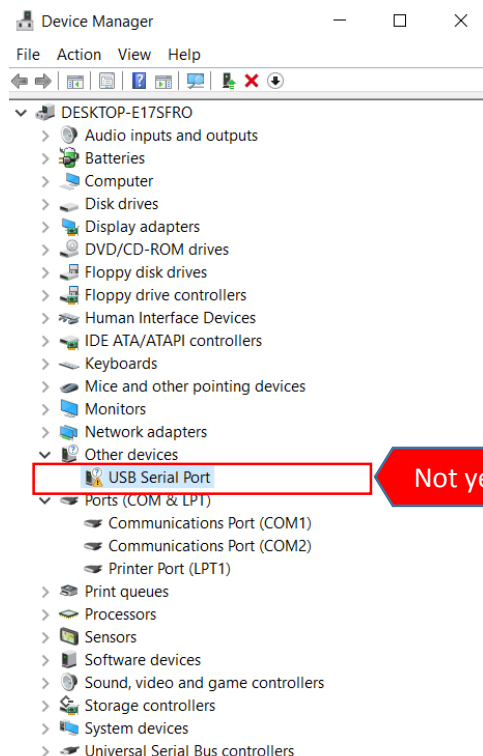
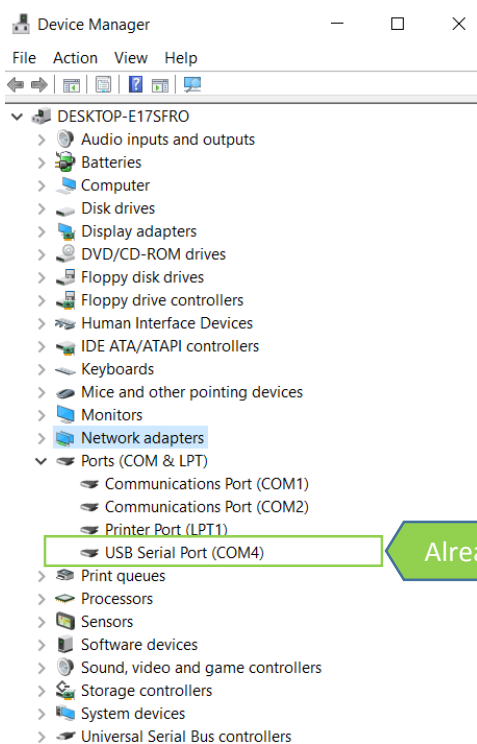


### Before Installing the USB driver:

- Connect the Nextech gauge to the computer via the mini USB cable.
- Power-up the Nextech gauge and wait a moment for Windows to recognize the new hardware device.
  - If the computer is connected to the Internet, Windows might attempt to locate the most recent drivers for the hardware.
- Check the status of installation by going to Device Manager.

\*You can access Device Manager through the Windows Control Panel or by Pressing  + R key and typing "devmgmt.msc" in the Run dialog box.

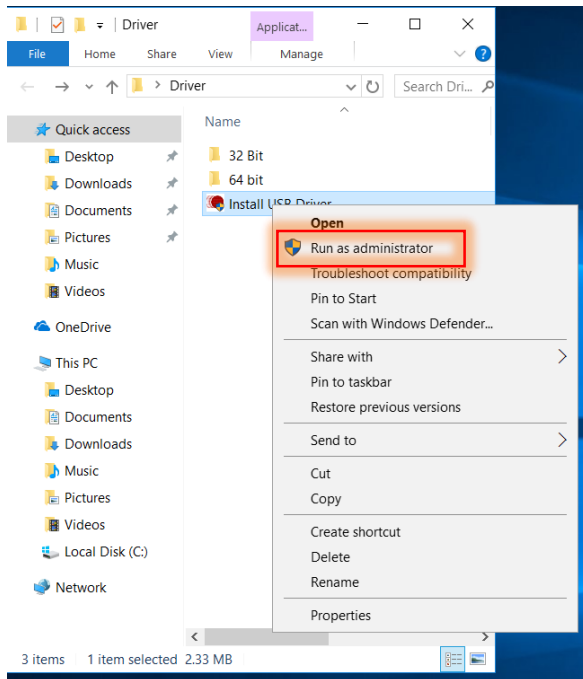
(Windows Device Manager illustrated in the picture below)



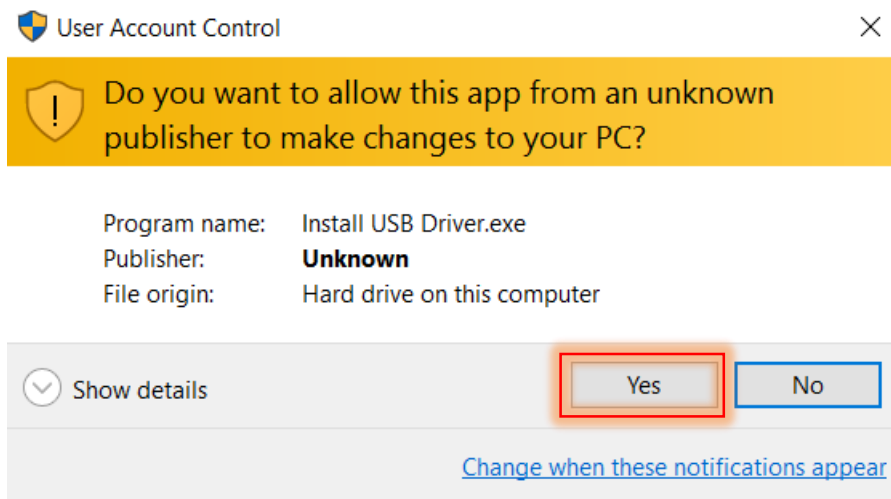
\*The assigned COM port number, "USB Serial Port (COM4)", may not be the same for each computer.

## Install USB Driver

1. Right click on “Install USB Driver” and choose “Run as administrator”.



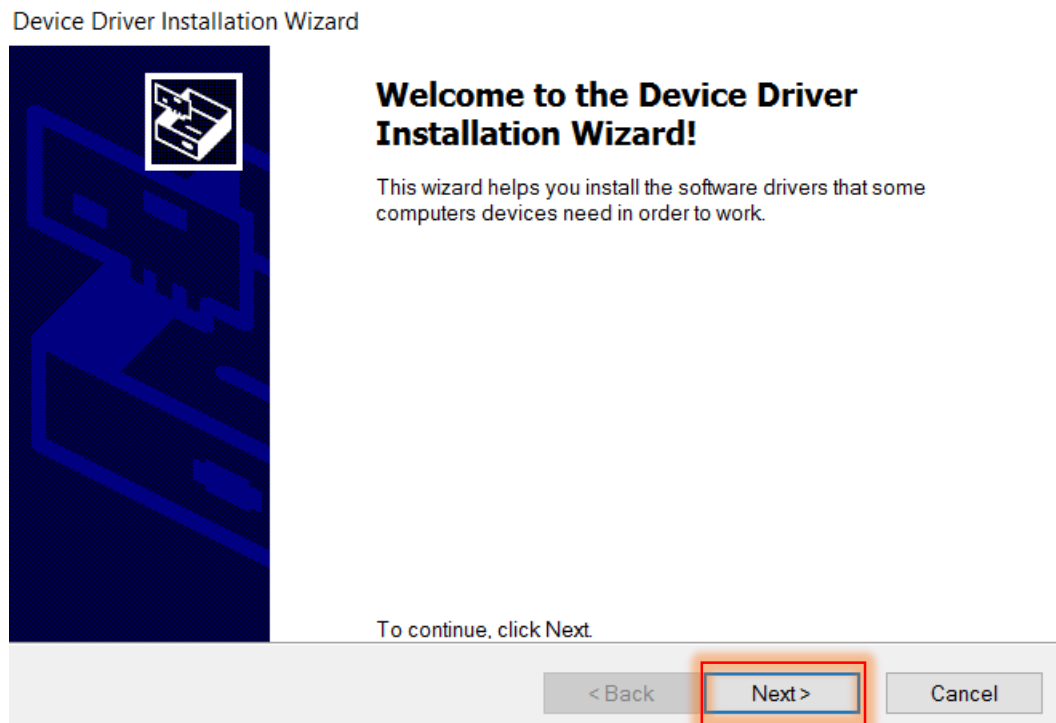
2. Click “Yes”.



3. Click "Extract".



4. Click "Next".




5. Select "I accept this agreement" and click "Next".

Device Driver Installation Wizard

### License Agreement



 To continue, accept the following license agreement. To read the entire agreement, use the scroll bar or press the Page Down key.

IMPORTANT NOTICE: PLEASE READ CAREFULLY BEFORE INSTALLING THE RELEVANT SOFTWARE:

This licence agreement (Licence) is a legal agreement between you (Licensee or you) and Future Technology Devices International Limited of 2 Seaward Place, Centurion Business Park, Glasgow G41 1HH, Scotland (UK Company Number SC136640) (Licensor or we) for use of driver software provided by the Licensor(Software).

BY INSTALLING OR USING THIS SOFTWARE YOU AGREE TO THE

☒ I accept this agreement ☐ I don't accept this agreement

Save As Print



< Back Next > Cancel

6. Wait for the Device Driver Installation Wizard to successfully complete.

Device Driver Installation Wizard

### The drivers are now installing...



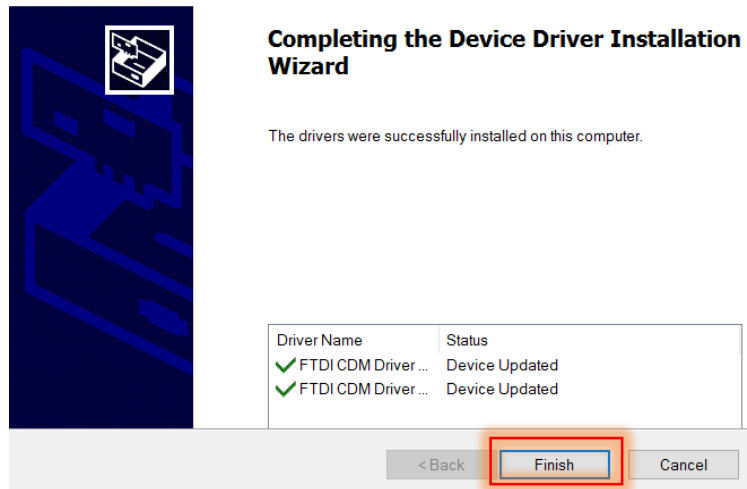
 

Please wait while the drivers install. This may take some time to complete.


< Back Next > Cancel

## 7. Installation completed.

Device Driver Installation Wizard



8. With your Nextech gauge connected to the computer and powered on, you can now verify proper installation and functioning of the USB driver by accessing Windows Device Manager. (See illustration below.)

\*You can access Device Manager through the Windows Control Panel or by Pressing  + R key and typing "devmgmt.msc" in the Run dialog box.

